

Simon|Bus



Smart Space Freely Control

simon
Since 1916 From Spain

Simon

Simon-Bus

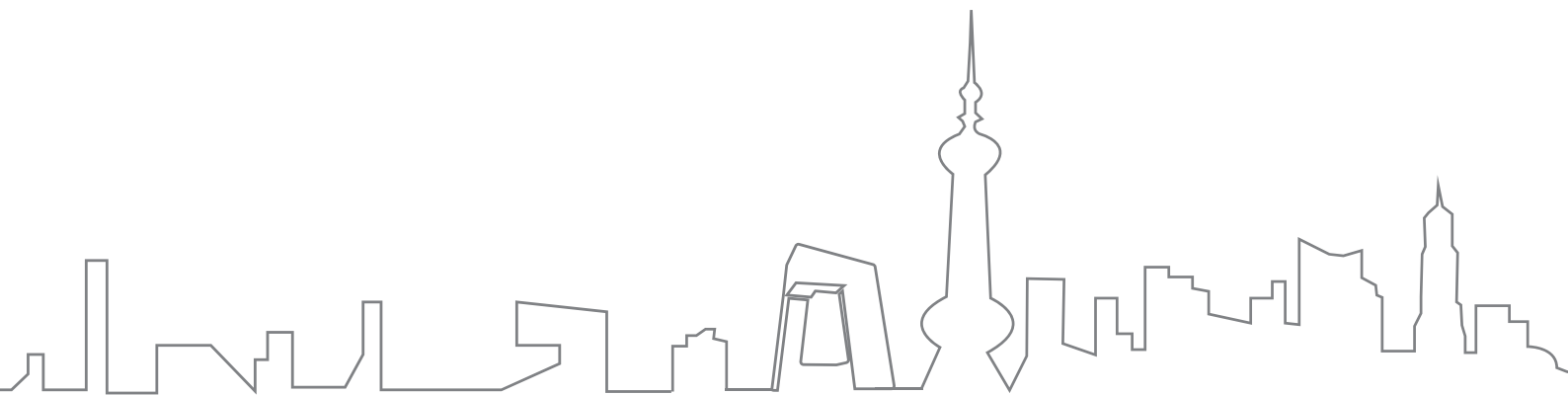
Smart Space · Hotel solutions

SIMON IN THE WORLD

Simon was established by Arturo Simon in 1916. The earliest factory was located in Olot, Catalonia, Spain. In 1972, the headquarter of Simon Group was relocated to Barcelona, which is renowned as the Flower of Europe.

Simon mainly specializes in producing switches, sockets, lighting and home smart systems. Always dedicated to product innovation, Simon has developed many products with intellectual property rights and won many honors, such as Spanish Royal Outstanding Enterprise and Spain's national Product Design Award.

Through a century of development, Simon group has established production bases in countries around the world, including China, Russia, India, Brazil, Mexico, Poland etc., and a sales network that covers over 90 countries across four continents.



SIMON IN CHINA

In July 1999, Simon entered China and established its first joint venture, Simon Quictone in Jiangsu Hai' an Economic and Technological Development Area. In 2002, Simon Automation, its second joint venture, was established. In 2008, the two joint ventures became wholly foreign-funded enterprises, with 100% of shares owned by Simon Group of Spain and were renamed Simon Electric (China) Co. Ltd. and Simon E-Commerce (China) Co. Ltd, respectively.

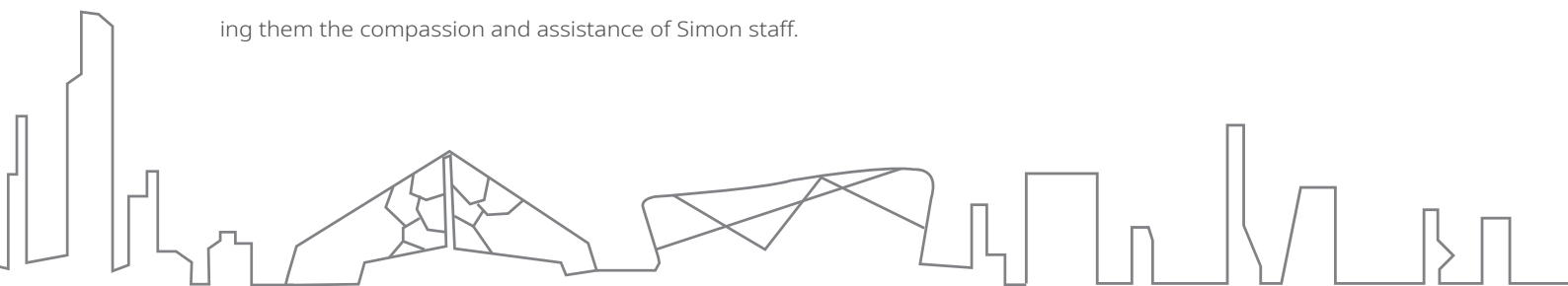
Depending on the technical support of Simon Group, Simon China has established a R&D team to meet Chinese market demand. Its laboratory, which focuses on testing product quality and performance, has been certified by China National Accreditation Service for Conformity Assessment (CNAS). It has developed a variety of products, which are related to switches & sockets, lighting, low-voltage electrical apparatus, smart control etc., and which have passed China Compulsory Certification. Furthermore, it owns over 100 patents.

Owing to their elegant designs, premium materials, exquisite techniques, high safety standards and strong aftersales service, Simon products are used in key projects, including the National Stadium, the Water Cube, CCTV Headquarters, Terminal T3 of Beijing Capital International Airport, Shanghai World Expo and Guangzhou Asian Games City. Simon China has also established long-term strategic partnerships with famous Chinese real estate companies, such as Vanke, Evergrande and Greenland etc.

Simon China has a complete marketing service network, nearly 30 offices all over China and nearly 2,000 distributors. It has extended its e-commerce business to all mainstream e-commerce platforms.

Simon China has implemented management systems, such as ISO 9001: 2015, ISO 14001: 2015 and OHSAS 18001: 2007. All its products have passed TUV NORD certification.

Simon China not only provides employees with ample space for growth and a platform for realizing their life value, but also shows concern to underprivileged social groups and victims of natural catastrophes by offering them the compassion and assistance of Simon staff.





Contents

13	Simon Advantages
17	Hotel Solutions
19	Network topology and systematic framework
21	Host Machine Parameters
30	Management software
33	Assorted Switches & Sockets
81	Projects cases



Smart

Compatible with mainstream smart terminals, such as smart phones, tablets, intelligent audios, users can view room status and control room facilities, anywhere via intelligent terminal.

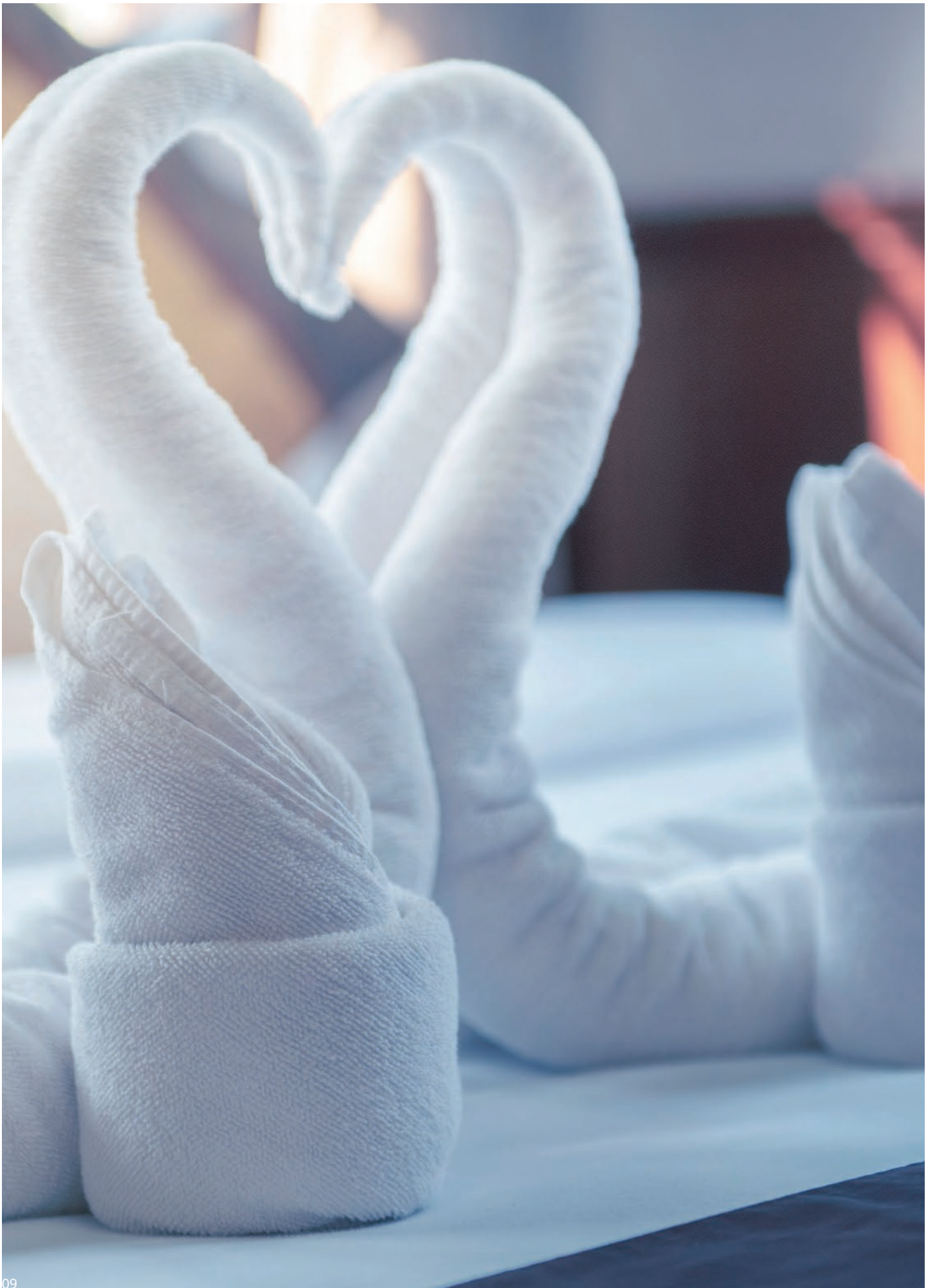


Comfortable

Lighting scene is combined with curtains, creating a warm guestroom atmosphere;

Air-conditioning system, central ventilation system, and aromatic system are applied to present a fresh and comfortable environment;

Switch panel is integrated with hotel design style, improving hotel grade.



Energy Saving

Reduce energy expenditure and operating cost through the intelligent control of air-conditioning, curtains, and exhaust fans;

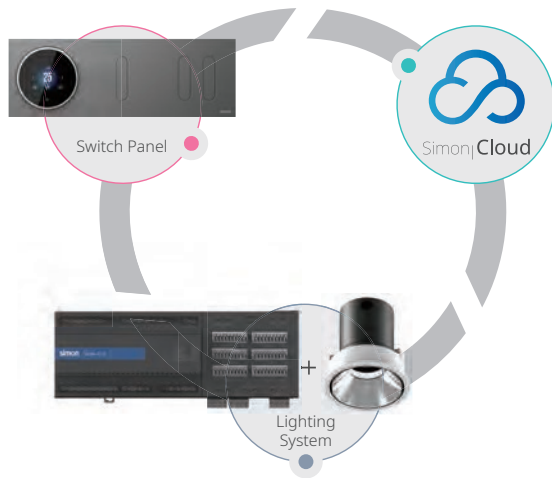
Effectively control lighting and avoid waste through plug-in electricity, infrared sensors, door contact, etc.



Efficient

Guest service request (SOS, washing clothes, clearing rooms, check-out, etc.) can be delivered to the customer service center promptly by Simon-Bus control system; Offers efficient services.

Simon Advantages



1 One-stop shopping

Based on a reliable and compatible Simon-Bus control system as well as professional and comprehensive switch panel products, it fully supports one-stop shopping for all hardware, software and auxiliary materials required by the project. Efficiently solves the customers' requirements, shortens period, reduces cost and improves efficiency.

2 Flexible product range Multiple solutions

Combining hotel space structure and control appliance volume, it provides Simon-Bus series of products with different configurations.



3 Personalized customization

It provides optional customized services according to the customers' special requirements for product functions or requirements for personalized control modes like WeChat and voice, etc.



4 Stable and mature product technology

Through three generations of improved design, Simon-Bus products continuously improve the details with mature technology and stable performance.

Brand-new 3rd generation Simon-Bus series module products

- Modular construction, more convenient maintenance
- One-key synchronization, no need to re-program for updating
- CAN bus architecture with more reliable performance



5 Intimate and perfect service

The professional technical team provides full service from mechatronic design, installation guide, debugging guidance and after-sales service, paying close attention to customer requirements and helping customers finish projects before final delivery.



Simon Advantages





6 Sincere cooperation

Simon has cooperated with domestic and overseas high-end hotel management companies, hotel proprietors, property developers and designing institutes for a long time, its products are widely used in numerous hotels, houses and office projects.

Hotel total solution










Individual user

Intelligent terminals can check equipment state anytime and anywhere via APP to conduct adjusting and controlling.

Simon-Bus control system conducts centralized control management of the main indoor electrical equipment (air conditioner, keycard switch, lighting and curtain etc.). Through real-time communication between local area networks and the computer, the operating state of the equipment can be sent to the management computer in time, which is convenient for the scientific management and maintenance by the administrators or service staff. Individual users can improve on the comfort level of the living or working space through the remote control of intelligent terminals.

Simon-Bus control system

-  Air conditioning system
-  Lighting system
-  Curtain control
-  State control
-  Service center
-  Maintenance management
-  Intelligent controlling

Switch panel

- Doorbell switch
- Intelligent energy-saving door magnet/window magnet
- Shaver socket
- Volume control switch
- Emergency button
- Sensor monitoring

Lighting product

- Hotel spotlight
- Fog-proof down light
- Low-voltage strip light
- Track spotlight
- Silicon controlled dimming spotlight
- Floor lamp
- Foot light
- Wall lamp



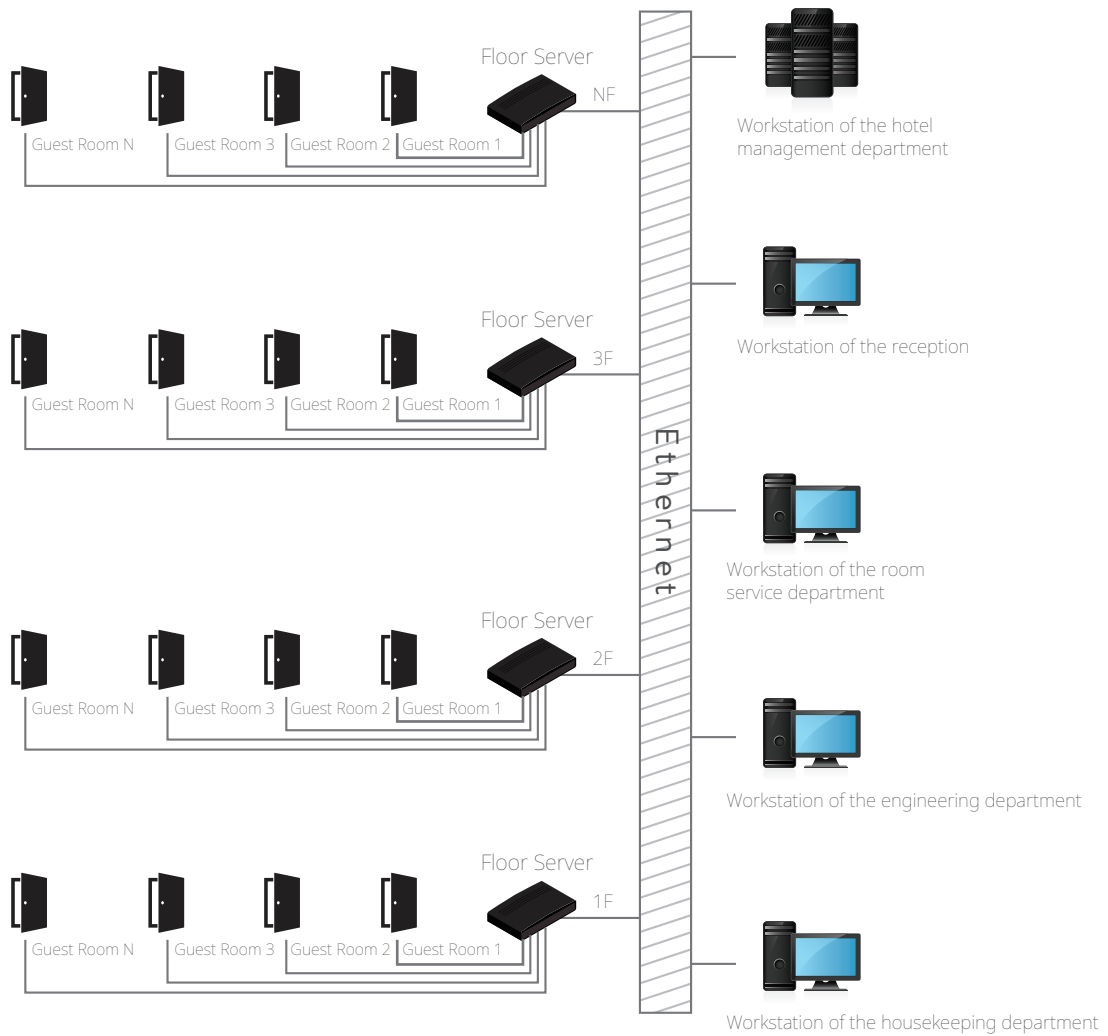
Manage users

Manage users can visit operating state of equipment in the architecture by software and conduct scientific controlling.

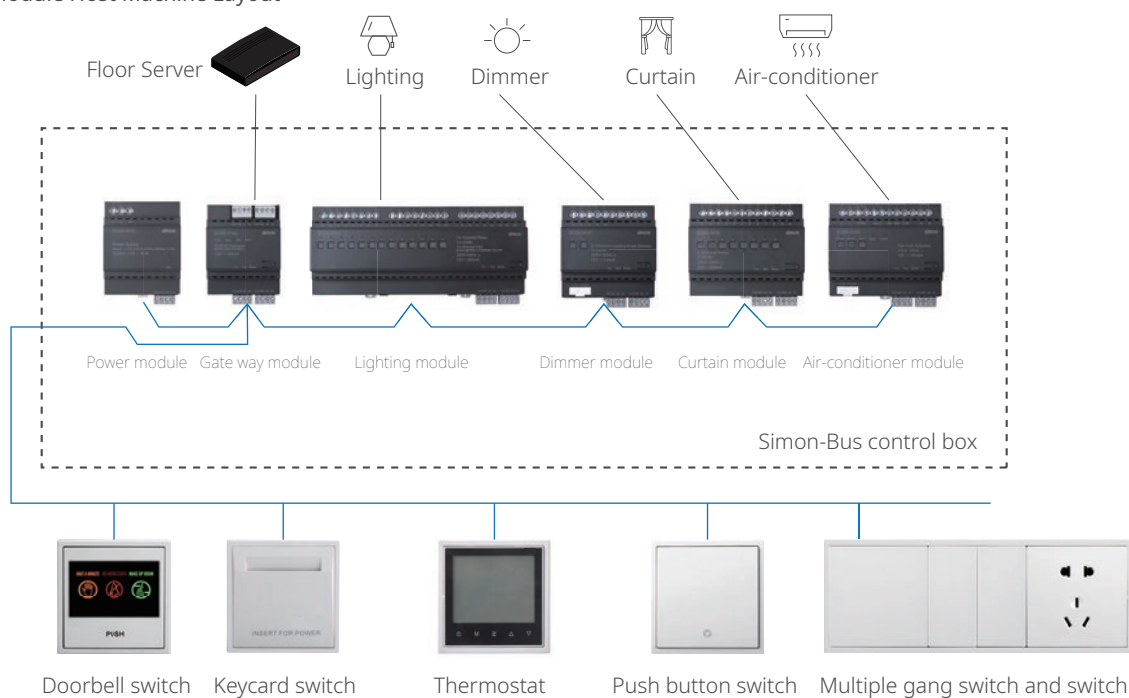
Network topology and systematic framework

Network topology and systematic framework

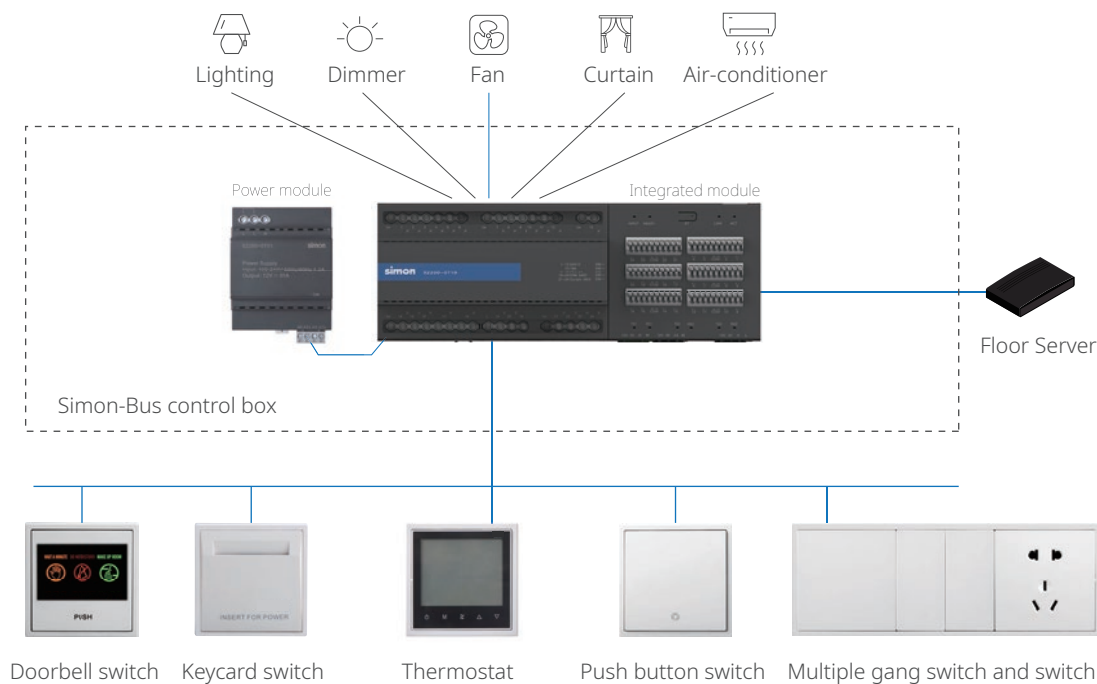
Simon adopts mature and reliable TCP/IP communication protocol with a high traffic rate as well as full duplex communication mode to ensure rapid, stable and efficient information transfer.



Module Host Machine Layout



Integrated Host Machine Layout



Product List

Power Supply Module



Product name	Power Supply module12VDC(G4)
Product code	S2200-0701
Basic parameter	
1.	Operating voltage:100-240V~50Hz/60Hz
2	Power output:12V/3.1A
3	Environmental temperature:-10.0°C ~40.0°C
4	Altitude:≤ 2000m
Main function	
1	Provide 12V/3.1A power supply
Dimension	72*90*100mm

Gateway Module



Product name	Intelligent gateway module (G4)
Product code	S2200-0702
Basic parameter	
1	Operating voltage:12V DC±5%
2	Rated current:100mA
3	Environmental temperature:-10.0°C ~40.0°C
4	Altitude:≤ 2000m
Main function	
1	1-way Ethernet interface
2	2-way RS485 interface
3	1-way CAN bus
Dimension	72*90*66mm



Product name	Docking AC gateway (VRF)
Product code	S2200-0716
Basic parameter	
1	Normal voltage: 12VDC
Main function	
1	3-way for RS485
2	3-way for VRF communication
3	1-way for Ethernet
4	Compatible with Simon (Modbus) thermostat
5	Docking to mainstream VRF brands(Daikin,Panasonic...)
Dimension	106*91*58mm

Relay Module



Product name	6-Channel relay module(G4)
Product code	S2200-0711
Basic parameter	
1	Normal voltage: 12VDC±5%
2	Rated current:200mA
3	Environmental temperature:-10.0°C ~40.0°C
4	Altitude:≤2000m
Main function	
1	6 way*16A for 3500W lighting,<40 lights
2	CAN (Simon Bus)
Dimension	108*90*66mm



Product name	8-Channel relay module(G4)
Product code	S2200-0713
Basic parameter	
1	Normal voltage: 12VDC±5%
2	Rated current:200mA
3	Environmental temperature:-10.0°C ~40.0°C
4	Altitude:≤2000m
Main function	
1	8 way*3A for 660W lighting, <20 lights
2	CAN (Simon Bus)
Dimension	108*90*66mm



Product name	14-Channel relay module (G4)
Product code	S2200-0704
Basic parameter	
1	Nominal voltage:12V DC±5%
2	Rated current:300mA
3	Environmental temperature:-10.0°C ~40.0°C
4	Altitude:≤2000m
Main function	
1	12 way*200W lighting
2	1 way*16A
3	1 way*200W emergency light(1 way<6 lights)
4	CAN (Simon Bus)
Dimension	216*90*66mm

Product List

Dimming Module



Product name	4-Channel TRIAC Dimming Module(G4)
Product code	S2200-0712
Basic parameter	
1	Nominal voltage:12V DC±5%
2	Rated current: 300mA
3	Environmental temperature:-10.0°C ~40.0°C
4	Altitude: ≤2000m
Main function	
1	4 way*3A, 660W TRIAC dimming, <65 lights
2	CAN (Simon Bus)
Dimension	216*90*66mm



Product name	4-Channel TRIAC Dimming Module(G4)
Product code	S2200-0717
Basic parameter	
1	Nominal voltage:12V DC±5%
2	Rated current: 300mA
3	Environmental temperature:-10.0°C ~40.0°C
4	Altitude: ≤2000m
Main function	
1	4 way*5A, 1100W TRIAC dimming, <65 lights
2	CAN (Simon Bus)
Dimension	216*90*66mm



Product name	2-Channel TRIAC Dimming Module(G4)
Product code	S2200-0707
Basic parameter	
1	Nominal voltage:12V DC±5%
2	Rated current: 200mA
3	Environmental temperature:-10.0°C ~40.0°C
4	Altitude: ≤2000m
Main function	
1	2 way*250W TRIAC dimming,<10 lights
2	CAN (Simon Bus)
Dimension	90*90*66mm



Product name	2-Channel 1-10V Dimming Module(G4)
Product code	S2200-0708
Basic parameter	
1	Nominal voltage:12V DC±5%
2	Rated current: 100mA
3	Environmental temperature:-10.0°C ~40.0°C
4	Altitude: ≤2000m
Main function	
1	2 way*3A, 660W 1-10V dimming, <15 lights
2	CAN (Simon Bus)
Dimension	90*90*66mm



Product name	4-Channel 1-10V Dimming Module(G4)
Product code	S2200-0718
Basic parameter	
1	Nominal voltage:12V DC±5%
2	Rated current: 100mA
3	Environmental temperature:-10.0°C ~40.0°C
4	Altitude: ≤2000m
Main function	
1	4 way*3A, 660W 1-10V dimming, <15 lights
2	CAN (Simon Bus)
Dimension	90*90*66mm

Strip Module



Product name	RGB/RGBW Strip Control Module(G4)
Product code	S2200-0413
Basic parameter	
1	Nominal voltage:12V-24V DC±5%
Main function	
1	4 way*5A,12-24V DC,20m(MAX strip length) RS485 (Simon Bus)
Dimension	103*76*24mm



Product name	Tunable White and Dimming Strip Control Module(G4)
Product code	S2200-0414
Basic parameter	
1	Nominal voltage:12V-24V DC±5%
Main function	
1	2 way*7.5A, tunable white and dimming strip, 12-24VDC,20m(MAX strip length)
2	RS485 (Simon Bus)
Dimension	103*76*24mm

Product List

I/O Module



Product name	64-Digital I/O Module(G4)
Product code	S2200-0703
Basic parameter	
1	Nominal voltage:12V DC±5%
2	Rated current: 800mA
3	Environmental temperature:-10.0°C ~40.0°C
4	Altitude: ≤2000m
Main function	
1	34 inputs for dry-contact signal
2	30 outputs for indicators, doorbell
3	CAN (Simon Bus)
Dimension	162*90*66mm

AC Module



Product name	2/4-Tube FCU & Ventilation Module(G4)
Product code	S2200-0706
Basic parameter	
1	Nominal voltage:12V DC±5%
2	Rated current: 100mA
3	Environmental temperature:-10.0°C ~40.0°C
4	Altitude: ≤2000m
Main function	
1	3 way*8A relay + 2 way*10A relay
2	FCU function: ON/OFF, Fan Speed(H/M/L), Cooling/Heating/Ventilation mode
3	CAN (Simon Bus)
Dimension	108*90*66mm

Curtain&Water heating Module



Product name	8-Channel Curtain&Water heating Module(G4)
Product code	S2200-0705
Basic parameter	
1	Nominal voltage:12V DC±5%
2	Rated current: 200mA
3	Environmental temperature:-10.0°C ~40.0°C
4	Altitude: ≤2000m
Main function	
1	8 way*3A(Curtain/Water Heating)
2	4 way for curtain(Strong current)
3	4 way for Water Heating(electric valve) /8 way for Water Heating(solenoid valve)
4	CAN (Simon Bus)
Dimension	108*90*66mm

Integrated RCU Module








* Need use with Power supply module(S2200-0701)

Product name	Integrated RCU module(G4)
Product code	S2200-0719
Main function	
1	230V output: 12 way*2A lighting 2 way*2A triac dimming 1 way*16A high-power 5 way*2A FCU 4 way*1A curtain
2	12V input/output: 24 way inputs for dry contact signal 24 way outputs for LED indicator
3	1- way Ethernet 2- way RS485 1- way SimCAN

Product List

Accessories

	Product name	Surface PIR Sensor
	Product code	S2200-0409
	Basic parameter	
	1	Nominal voltage:9VDC-16V
	2	Rated current:50mA
	3	Detection range: diameter \leq 6m (installation height \leq 3m)
	5	Ceiling installation
	Main function	
	1	Pyroelectricity infrared induction with signal output when people come over and without signal output when people walk away.
	2	RS485(SimonBus)
	Product name	Illumination Sensor
	Product code	S2200-0411
	Basic parameter	
	1	Nominal voltage:9VDC-16V
	2	Rated current:20mA
	3	Detection range: 0~65530LX
	4	illumination measure error:<10%
	5	illumination resolution:1LX
	6	Ceiling installation
	Main function	
	1	RS485(SimonBus)
	Product name	Infrared and microwave dual sensor
	Product code	S2200-0412
	Basic parameter	
	1	Nominal voltage:9V DC \pm 16%
	2	Rated current: 85mA
	3	Working frequency :24GHz~24.25GHz
	4	Detection range: diameter \leq 6m (installation height \leq 3m)
	5	Ceiling installation
	Main function	
	1	RS485(SimonBus)
	Product name	Door magnet (DC12V) (5 sets)
	Product code	S2200-0404
	Basic parameter	
	1	Nominal voltage:12V DC \pm 5%
	2	Rated current:100mA
	3	Sensing distance:10 ~15mm
	Main function	
	1	It can be installed on the door of the hotel or closet in order to test the on-off state of the door.
	2	Dry contact



Product name	Window magnet (DC12V) (5 sets)
Product code	S2200-0405
Basic parameter	
1	Nominal voltage:12V DC±5%
2	Rated current:300mA
3	Open distance (D):10 ~15mm
4	Surface mounted
Main function	
1	It can be installed on the window of the hotel in order to test the on-off state of the window.
2	Dry contact

Smart Curtain



Product name	Smart Curtain Motor
Product code	S2200-0415
Basic parameter	
1	Nominal voltage:220V
2	RS485 Output
Main function	
1	RS485 (Simon Bus)



Product name	Smart Roller Shutter Motor
Product code	S2200-0416
Basic parameter	
1	Nominal voltage:220V
2	RS485 Output
Main function	
1	RS485 (Simon Bus)

Product List

Installation box (G4)



Product name	Module (G4) RCU installation box
Product code	S2200-0103
Basic parameter	
1	Nominal voltage:220V±10% ~ 50Hz
2	-10℃ ~ 40℃
3	≤ 90%RH (no condensation of moisture)
Main function	
1	Used for installing modularization RCU
Dimension	580*450*110mm

	Product name	Integrated Module (G4) RCU installation box
	Product code	A1565-2101
	Main function	
	1	Used for installing Integrated RCU(one row)



Management Software

Individual users



Mobile phone/Pad APP control

Users and proprietors can control as they wish
Start intelligent, convenient and beautiful life

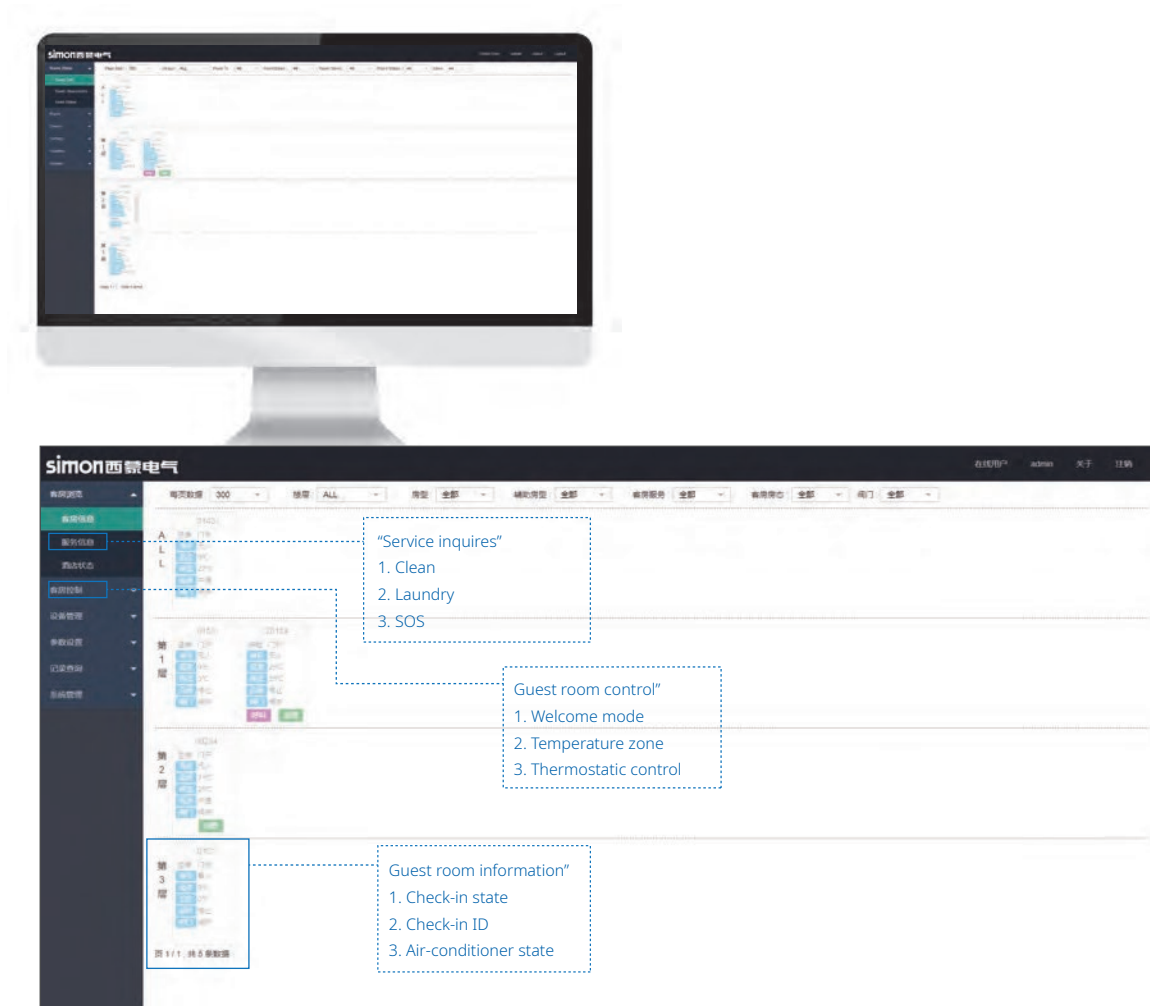


WeChat terminal control

Distinct interface and convenient usage
Help users and proprietors to control easily

Management Software

Management users



PC terminal control

Provide comprehensive management interface for proprietors
Convenient use and maintenance, high reliability

Management functions

Host management	<ol style="list-style-type: none"> 1. Search hosts in the network and register according to floors and room types 2. Batch set host information 3. Batch issue host upgrading firmware and configuration information
Information view and control	<ol style="list-style-type: none"> 1. Real-time display of room state (rent out, for rent, check out, vacant) 2. Real-time display of service information (SOS, do not disturb, clean up, check out, calling, laundry) 3. Room abnormal remind, including door opening with or without user in the room, safe box opening with un-user in the room, safe box closing while check out, abnormal room temperature, abnormal door closing, disconnected temperature controller. 4. Real-time display of air conditioners' state in the room (wind speed and room temperature, etc.) 5. Real-time display of identity recognition information of inserted room card 6. Real-time switch of room state 7. Support batch operation according to floors, room types and room states etc.
Air conditioning management	<ol style="list-style-type: none"> 1. Air conditioner controlling setting (two-pipe system/four-pipe system) 2. Associated with room state, activate air conditioner 3. General settings aiming at common users, like mode setting, temperature setting and wind speed setting etc. 4. Professional settings aiming at common users, like compensation temperature and dead zone temperature etc. 5. Advanced settings are for professional debugging personnel 6. Support batch operation according to floors, room types and room states etc.
Lighting scene management	<ol style="list-style-type: none"> 1. Single lamp control 2. Group control for user-defined scene and command scene 3. Support batch operation according to floors, room types and room states etc.
APP management	<ol style="list-style-type: none"> 1. Set up interface elements of APP application 2. Set up corresponding room number of PAD
Inquire statistical management	<ol style="list-style-type: none"> 1. Inquire room service, air conditioning control, loop state and hotel state 2. Inquire according to the time period, and then save and print 3. Inquire everyday power consumption data of each room
Maintenance function	<ol style="list-style-type: none"> 1. Malfunction repair 2. Real-time display of repair progress
Authority management	<ol style="list-style-type: none"> 1. Assign different kinds of authority for different roles
System management	<ol style="list-style-type: none"> 1. Set up host IP and port, multicast and system docking address 2. Inquire system log including operation module, movement, details, result, operator, IP address and operation time of the executed operation.

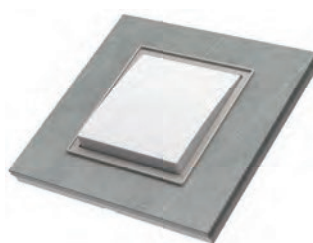


ELV switch collection



35

Simon S20 RCU



45

Simon V8 RCU



53

Simon i7 RCU



67

Simon E6 RCU



75

Simon E7 RCU

Assorted switches and sockets



Simon|S20

Retro Future

High class aluminium alloy for anodising

CNC precision machining process

Rotating touch screen thermostat

Light on/off and dimming control, real-time touch feedback

Custom engraving icon and text



Black



Grey



Champagne



Lighting system



AC system



Curtain system



Wide range of switches and sockets

RS485 Switch

* use with simon-bus , open protocol available for third party RCU system (Modules and frames are separated)



82E641

1 Gang ELV switch Module
(DC12V, RS485)



82E645

1 Gang ELV dimming switch Module
(DC12V, RS485)



82E642

2 Gang ELV switch Module
(DC12V, RS485)



82E646

2 Gang ELV dimming switch Module
(DC12V, RS485)

RS485 Keycard Switch



82E644

4 Gang ELV switch Module
(DC12V, RS485)



82E604

S20 RF Keycard switch Module
(DC12V, RS485)

RS485 Switch

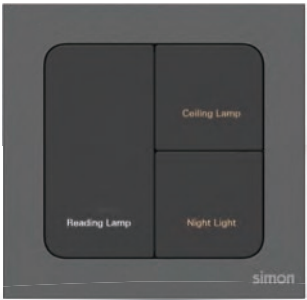
* use with simon-bus , open protocol available for third party RCU system (Modules and frames are separated)



82E9001
1 Gang dual backlight switch
module(DC12V,RS485)



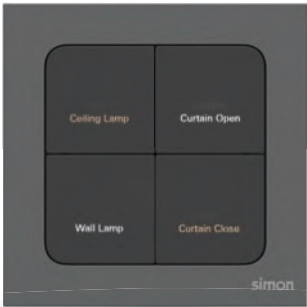
82E9002
2 Gang dual backlight switch
module(DC12V,RS485)



82E9003
3 Gang dual backlight switch
module(DC12V,RS485)



82E9004
3 Gang dual backlight switch
module(DC12V,RS485)



82E9005
4 Gang dual backlight switch
module(DC12V,RS485)

RS485 Thermostat Module

* use with simon-bus, open protocol available for third party RCU system



82E702

S20 Central-AC thermostat
Module(DC12V,RS485,FCU)



82E704 ★

S20 Central-AC thermostat
Module(DC12V,RS485,Simon-Bus,VRF)



82E701 ★

S20 Central-AC thermostat Module
(DC12V,RS485,Modbus open protocol
available for third party RCU system, VRF)

Others

S20 also offers high voltage sockets with the wider range of multimedia solutions, USB chargers and communication sockets and sensors.



Schuko Socket



Multi-standard Socket



BS Socket



EU-US Socket



Telephone



TV



USB(A+C)



AP



Floor sensor



Data



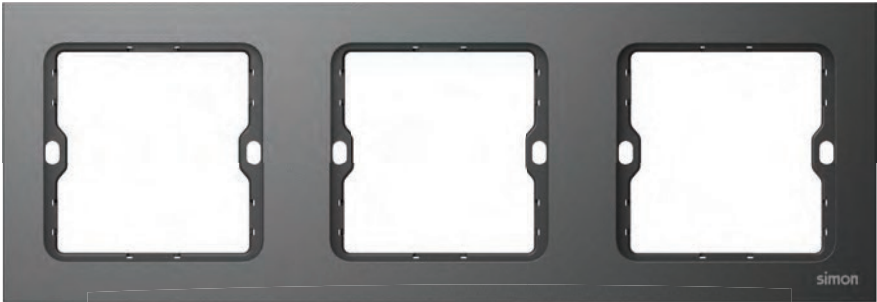
SOS



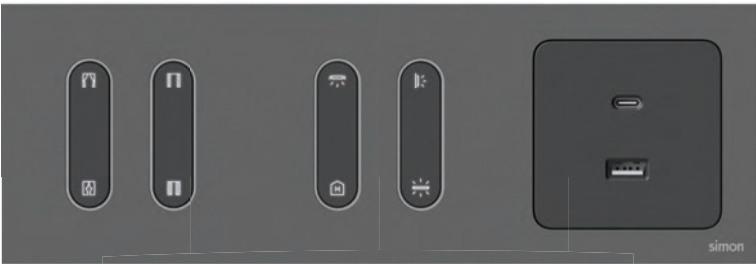
Shaver socket

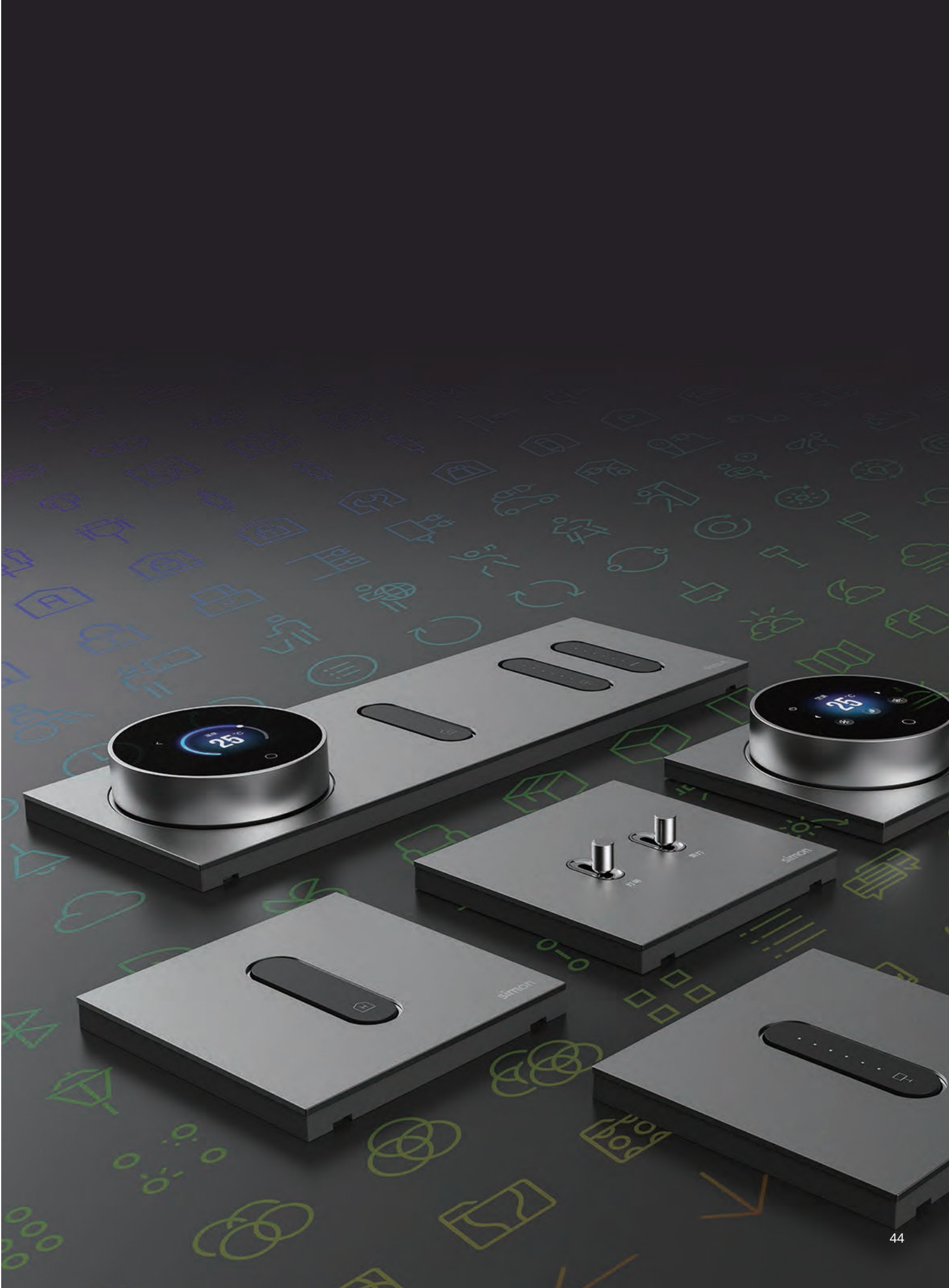
Frames





Multiple gang solution example





Assorted switches and sockets

Simon|V8

ELEGANT & LUXURY DESIGN



V8 Rock



V8 Classic



V8 Metal



V8 Crystal

RS485 Switch

* use with simon-bus, open protocol available for third party RCU system



80E6401

1 Gang ELV dual backlight switch Module
(12VDC / RS485 / RCU, Master)



80E6402

2 Gang ELV dual backlight switch Module
(12VDC / RS485 / RCU, bathroom, mirror)



80E6403

3 Gang ELV dual backlight switch Module
(12VDC / RS485/RCU, Master, night, reading)



80E6404

4 Gang ELV dual backlight switch Module
(12VDC / RS485 / RCU, Master, night, ceiling, strip)

RS485 Keycard Switch



80E605

V8 RF Keycard switch Module
(DC12V, RS485)

RS485 Thermostat Module



80E710

V8 thermostat Module
(DC12V, RS485,FCU)

Dry-contact Switch

*Directly use with other RCU



80117
1 Gang ELV push-button Module
with LED indicator



80127
2 Gang ELV push-button Module
with LED indicator



80137
3 Gang ELV push-button Module
with LED indicator



80147
4 Gang ELV push-button Module
with LED indicator

Dry-contact Keycard Switch



80809
SOS switch Module



V8 RF Keycard switch Module

Other

V8 also offers high voltage sockets with the wider range of multimedia solutions, USB chargers and communication sockets and sensors.



TV



Telephone



Data



USB+HDMI



Schuko Socket



EU-US Socket



Multi-standard Socket with USB Chargers



2 Pin Socket



BS Socket

Multiple gang solution example



2-gang frame (Doorway control switch)



3-gang frame (Desk side control switch)

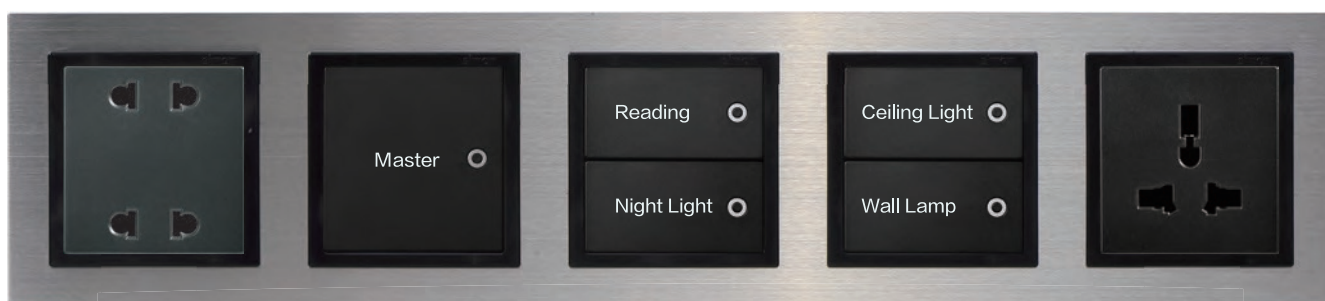


5-gang frame (Bedside control switch)

Multiple gang solution example



3-gang frame (Hotel multimedia control switch)



5-gang frame (Bedside control switch - ELV)

Frames



Plastic



Crystal



Metal



Rock



Assorted switches and sockets



Simon|i7

Elegant Simple Unique Sophisticated



White



Champagne



Grey



Black

RS485 Switch

* use with simon-bus , open protocol available for third party RCU system



70E645
1 Gang ELV switch Module
(DC12V, RS485)



70E646
2 Gang ELV switch Module
(DC12V, RS485)



70E647
3 Gang ELV switch Module
(DC12V, RS485)



70E648
4 Gang ELV switch Module
(DC12V, RS485)



70E6401
1 Gang dual backlight switch Module
(DC12V, RS485)



70E6402
2 Gang dual backlight switch Module
(DC12V, RS485)

Dry-contact Switch

*Directly use with other RCU



70E117
1 Gang ELV switch Module
with LED indicator



70E127
2 Gang ELV switch Module
with LED indicator



70E137
3 Gang ELV switch Module
with LED indicator



70E147
4 Gang ELV switch Module
with LED indicator



70E116
1 Gang ELV switch Module



70E126
2 Gang ELV switch Module

RS485 Switch

* use with simon-bus , open protocol available for third party RCU system



70E6403
3G dual backlight switch Module
(DC12V, RS485)



70E6404
4G dual backlight switch Module
(DC12V, RS485)

RS485 Keycard Switch



70E605
i7 RF Keycard switch Module
(DC12V, RS485)

RS485 Thermostat Module



70E7015
i7 Central-AC thermostat Module
(DC12V, RS485,FCU)



70E7035 ★
i7 Central-AC thermostat Module
(DC12V, RS485, Simon-Bus,VRF)



70E7016 ★
i7 Central-AC thermostat Module
(DC12V,RS485,Modbus open protocol
available for other RCU, VRF)

Dry-contact Switch

*Directly use with other RCU



70E136
3 Gang ELV switch Module



70E146
4 Gang ELV switch Module

Dry-contact Keycard Switch



705901
SOS switch Module



i7 RF Keycard switch Module

Dry-contact Doorbell Switch



70E615
i7 ELV doorbell switch Module
(DC12V, 6-wire)

i7 KNX Low voltage switch



Modules and frames are separated

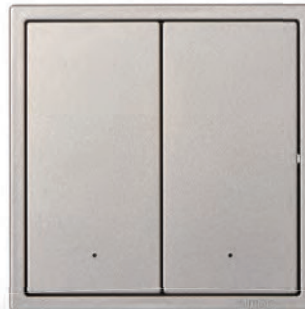
white	-46 champagne	-61 grey	-26 black
-------	---------------	----------	-----------



70E901 1 gang smart KNX switch module(24VDC)



70E902 2 gang smart KNX switch module(24VDC)



70E903 3 gang smart KNX switch module(24VDC)



i7 KNX Low voltage switch

Modules and frames are separated

white -46 champagne -61 grey -26 black



70E904 4 gang smart KNX switch



70E905 8 gang smart KNX switch



70E7034 All-in-one smart KNX AC thermostat controller



Other

i7 also offers high voltage sockets with the wider range of multimedia solutions, USB chargers and communication sockets and sensors.(Module only)



USB(A+C)



Shaver Socket



Telephone and Data



Telephone and TV



Volume Control



Presence detector floor light



AP



Multi-standard Socket with Switch



BS Socket

i7 RCU Low voltage switch

Modules and frames are separated

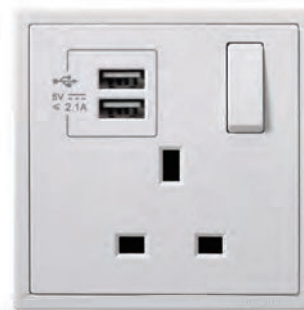
white -46 champagne -61 grey -26 black



Schuko Socket



Twin EU-US with Earth Socket



13A BS Switched Socket
with Twin USB chargers

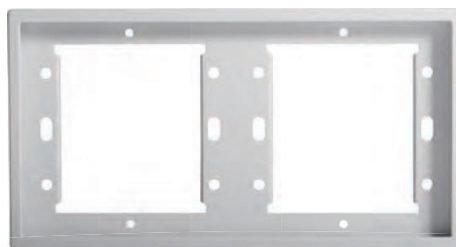


Multi-standard Socket
with Twin USB Chargers

Frames(76 Type)



1 Gang frame



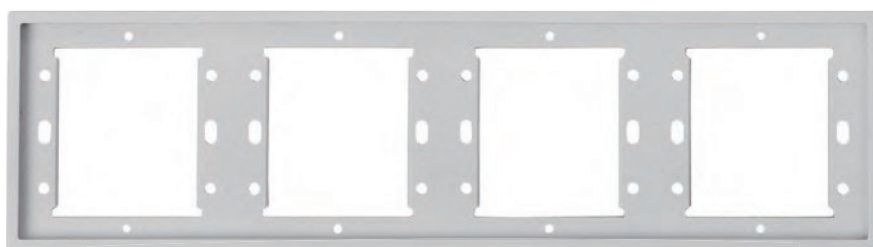
2 Gang frame(76 Type)



3 Gang frame(76 Type)



60710-50

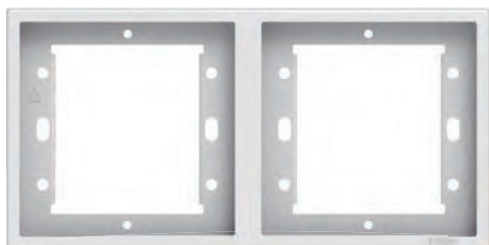


4 Gang frame(76 Type)



5 Gang frame(76 Type)

Frames(86 Type)



2 Gang frame(86 Type)



3 Gang frame(86 Type)



45DH86



4 Gang frame(86 Type)

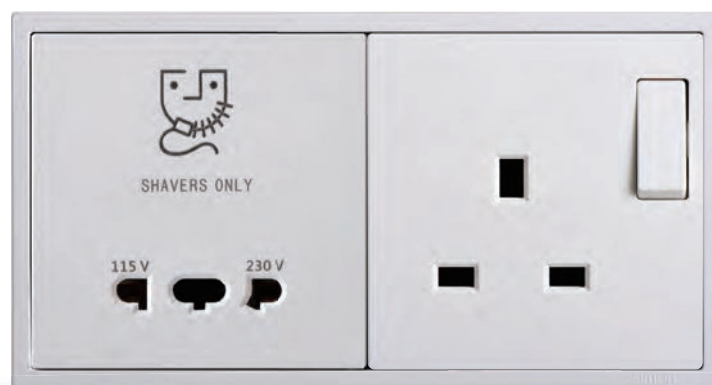


5 Gang frame(86 Type)

Multiple gang solution (example)



2-gang frame (Doorway control switch)



2-gang frame (Shaver socket control switch)



5-gang frame (Hotel multimedia control switch)



3-gang frame (Bedside control switch - ELV)



3-gang frame (Bedside control switch)



5-gang frame (Bedside control switch)

Assorted switches and sockets

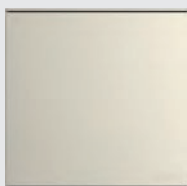
simon

Simon|E6

Endless freedom Ingenious steady



White



Champagne



Grey



Black

RS485 Keycard Switch

* Need protocol docking to use with other RCU



72E605

E6 RF Keycard switch Module
(DC12V, RS485)

RS485 Thermostat Module

*VRF,need customized AC gateway module



72E710

E6 Central-AC thermostat Module
(DC12V, RS485,FCU)



72E706 ★

E6 Central-AC thermostat Module
(DC12V,RS485,Modbus open protocol
available for other RCU, VRF)

Dry-contact Switch

*Directly use with other RCU



72E117

1 Gang ELV push-button Module
with LED indicator



72E116

1 Gang ELV push-button Module



72E127

2 Gang ELV push-button Module
with LED indicator



72E126

2 Gang ELV push-button Module



72E137

3 Gang ELV push-button Module
with LED indicator



72E136

3 Gang ELV push-button Module



Dry-contact Switch

*Directly use with other RCU



72E147

4 Gang ELV push-button Module
with LED indicator



72E146

4 Gang ELV push-button Module

Dry-contact Keycard Switch



725901

SOS switch Module



E6 RF Keycard Switch

Others

E6 also offers high voltage sockets and switches with the wider range of multimedia solutions, USB chargers, communication sockets and sensors.



TV



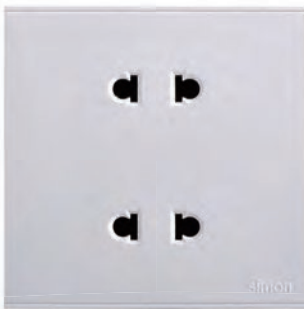
Telephone



Data



Volume Control Switch



Twin EU-US Socket



Twin EU-US with Earth Socket



13A BS Switched Socket



15A BS Switched Socket



Schuko Socket

Others

E6 also offers high voltage sockets and switches with the wider range of multimedia solutions, USB chargers, communication sockets and sensors.



Multi-standard Socket with
Twin USB chargers



13A BS Switched Socket
with Twin USB chargers

E6 RCU Low voltage switch

Modules and frames are separated



1 Gang frame



2 Gang frame(86 Type)



3 Gang frame(86 Type)



4 Gang frame(86 Type)



5 Gang frame(86 Type)



2-gang frame (Shaver socket switch)



5-gang frame (Bedside control switch)



2-gang frame (Bath room control switch)

E6 Multiple gang solution

Modules and frames are separated

white -46 champagne -61 grey -26 black



2-gang frame (Doorway control switch)



3-gang frame (Bedside control switch – ELV)



3-gang frame (Bedside control switch)

Assorted switches and sockets



Simon|E7

Endless freedom Ingenious steady



Champagne



Grey

RS485 Switch

* use with simon-bus, open protocol available for third party RCU system



73E641-46

1 gang ELV switch (DC12V,RS485)



73E642-46

2 gang ELV switch (DC12V,RS485)

RS485 Keycard Switch

* Need protocol docking to use with other RCU



73E644-46

4 gang ELV switch (DC12V,RS485)



E7 RF Keycard Switch
(DV12V, RS485)

RS485 Thermostat Module



73E710

Thermostat Module (DC12V,RS485,FCU)



73E706 ★

Thermostat Module
(DC12V,RS485,Modbus open protocol
available for other RCU, VRF)

Frames



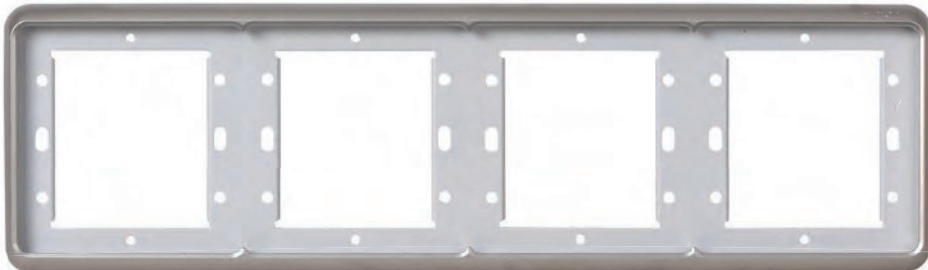
1 Gang frame



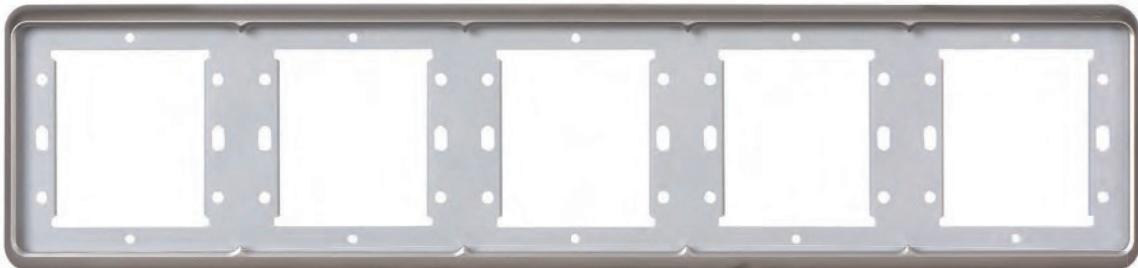
2 Gang frame



3 Gang frame



4 Gang frame



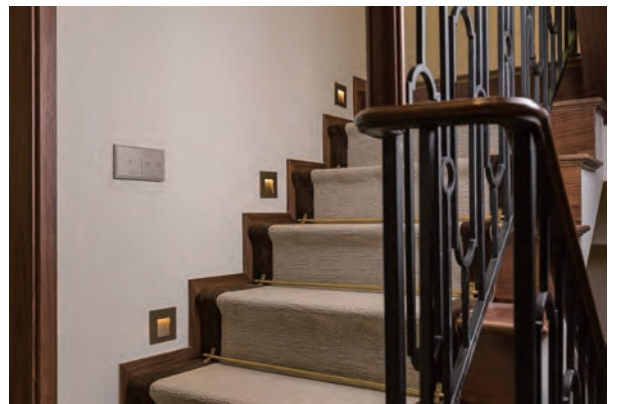
5 Gang frame

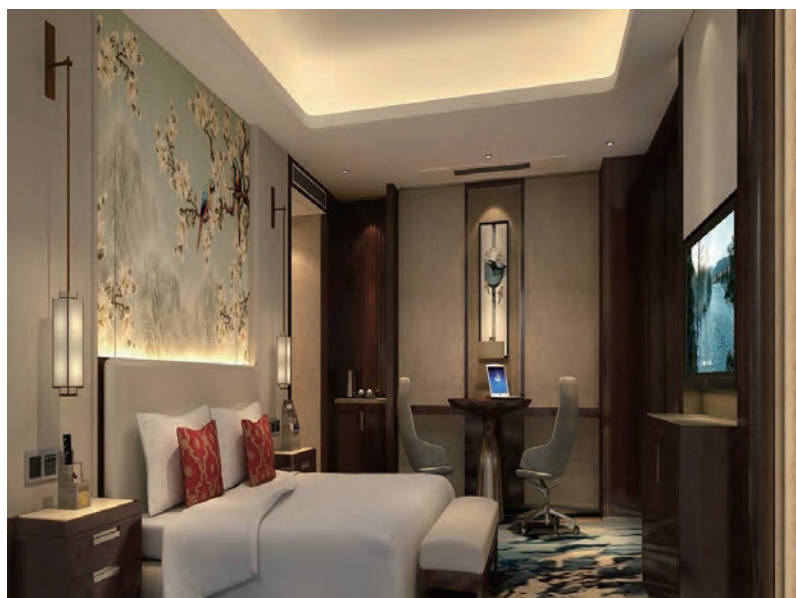
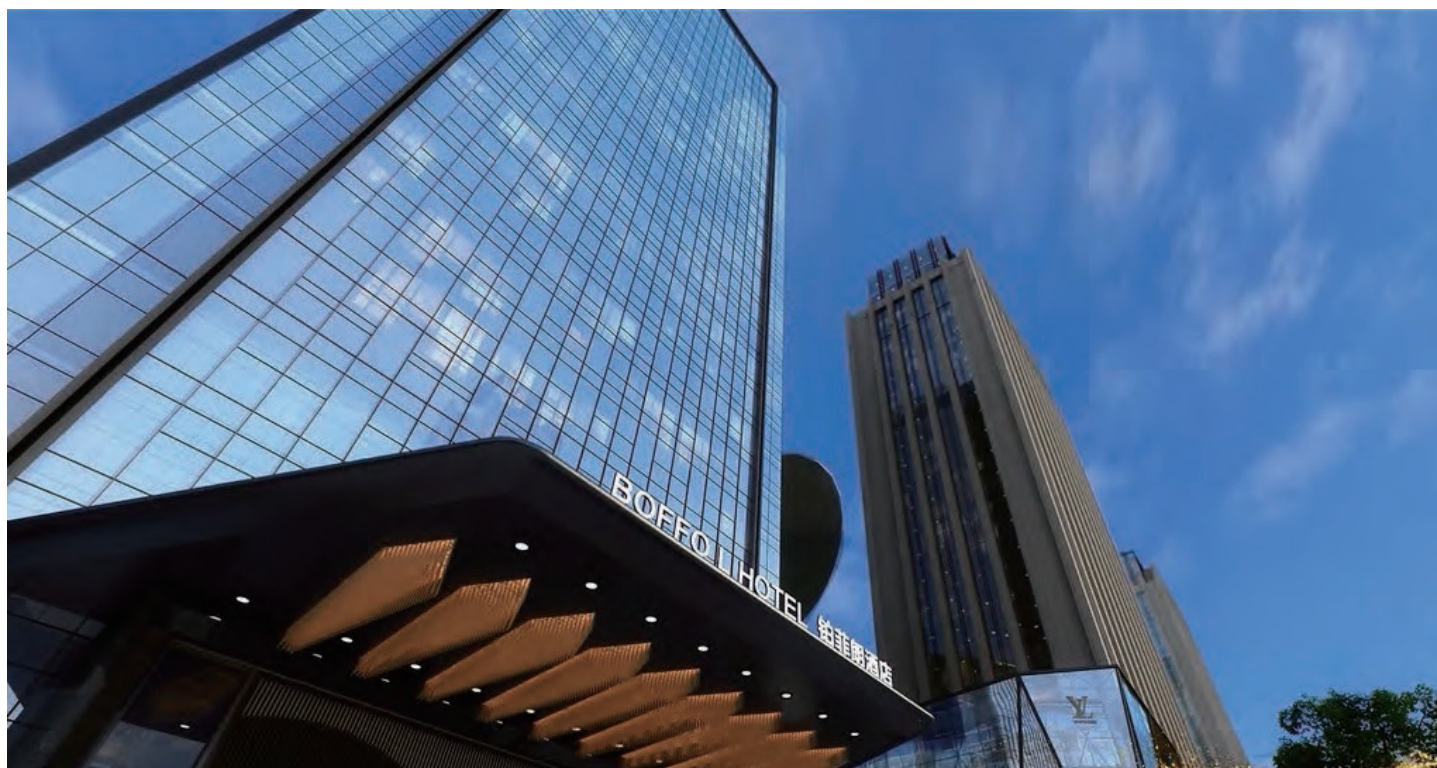
Project Cases



Capella Shanghai Jian Ye Li

Located in Shanghai Hengfu Historical and Cultural Features Protected Area of Xuhui District, the hotel possesses "shikumen" architectural complex built in the 1930s by the French land agent, making it the only seven-star all-villa city resort hotel in Shanghai. The rebuilt architecture will reflect traditional features of Shanghai dwelling with harmonious blending of Shanghai-style culture and Paris expressions. Simon provides guest room control system and switch panel for the hotel as well as witnesses the luxurious regeneration of the historical architecture.





BOFFO L HOTEL XIAN

Simon provides the entire solution of guest room control management for BOFFO LONG Hotel in Xi'an "BOFFO LONG" -- an international hotel brand of Australia, adhering to the work concept of "professional, focused and concentrated" has devoted itself to elaborate the carving of "BOFFO LONG" and "PERFECT" brand for many years. It has successfully created the service concept and system with the core of "surprise + touched," bringing "customized" and "overjoyed touched" experience for guests.

Project Cases



DoubleTree by Hilton Hotel Chongqing

It is located at the commercial center of Nanping, which is close to Chongqing International Convention and Exhibition Center, commercial office building, state office building, shopping center and famous scenery. Double Tree by Hilton Hotel Chongqing is equipped with 236 guest rooms and suites. The application of Simon products can bring more efficient management and high-class image for hotels.



1 Wyndham Sanya Bay

2 Howard Johnson Jinyi Hotel Chongqing

3 Sofitel Kunming

4 Ambassador Hotel Tianyi

5 Qinghai Hotel

6 Amara Signature Shanghai



7



8



9

7 Hilton Jiuzhaigou Resort

8 V-leader Shenzhenair International Hotel Yinchuan

9 Sanya Shanhaitian Marriott Hotel

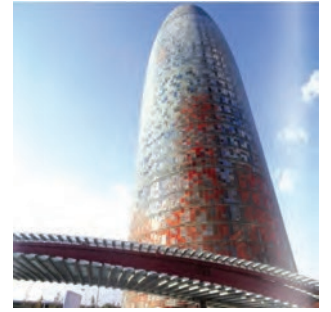
Project Cases



Barcelona Olympic Stadium, Barcelona, Spain



Spanish Pavilion at the Shanghai World Expo 2010, Shanghai, China



Torre Agbar, Barcelona, Spain



CCTV Building



Beijin V-Continent Crown International Hotel



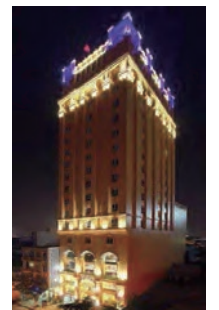
Hotel JW Marriot



Beijing National Aquatics Center (Water Cube), Beijing, China



Kremlin, Moscow, Russia



Gopatel Hotel, Vietnam



Dolpin Plaza, Hanoi, Vietnam



Micasa All Suite Hotel, Kuala Lumpur, Malaysia



Double Tree by Hilton, Johor Bahru

simon
Since 1916 From Spain

simon



SIMON ELECTRIC VIETNAM „JSC

Lot CN06, Yen My II Industrial Zone, Yen My Town, Hung Yen Province, Vietnam



0968 111 900

HANOI OFFICE

Add: 5th floor, C plus Office Building,
Cluster 28, Thanh Thai Street, Dich Vong Ward,
Cau Giay District, Hanoi City

DANANG OFFICE

Add: No. 29 Hoang Van Thai,
Hoa Minh Ward, Lien Chieu District,
Da Nang City

HO CHI MINH OFFICE

Add: 4th floor,
Y12 Hong Linh Building,
15 Ward, 10 District, HCM city

CAN THO OFFICE

Add: No.124 Vo Van Kiet, Binh Trung,
Long Hoa Ward, Binh Thuy District,
Can Tho City